



GMT MONTHLY MEMBERSHIP PROGRESS REPORT

Results as of: 6/30/2018

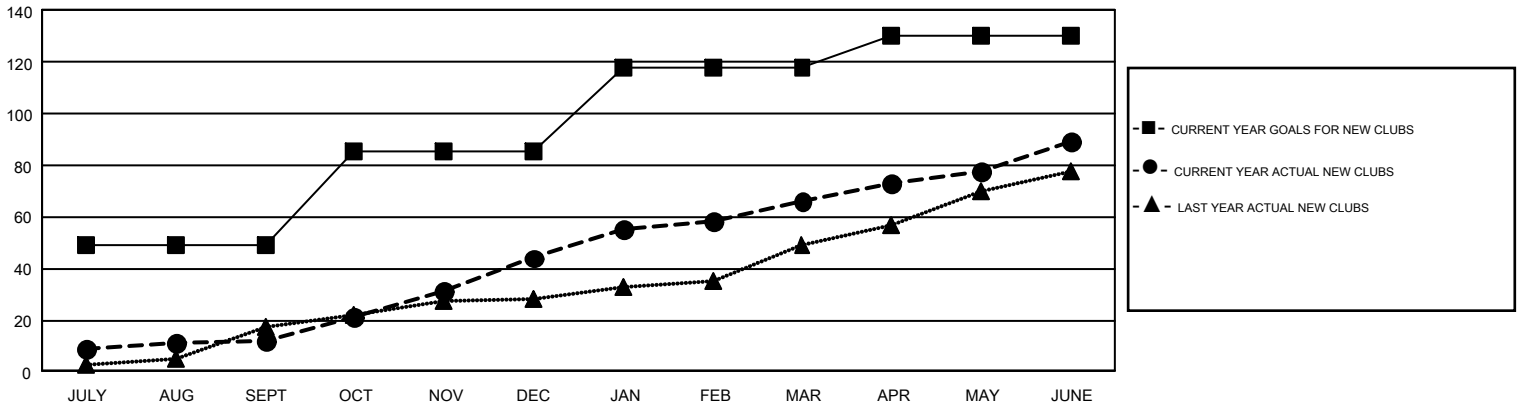
GMT Constitutional Area 6, Group E

GMT: VASUDEV VALAWALKAR

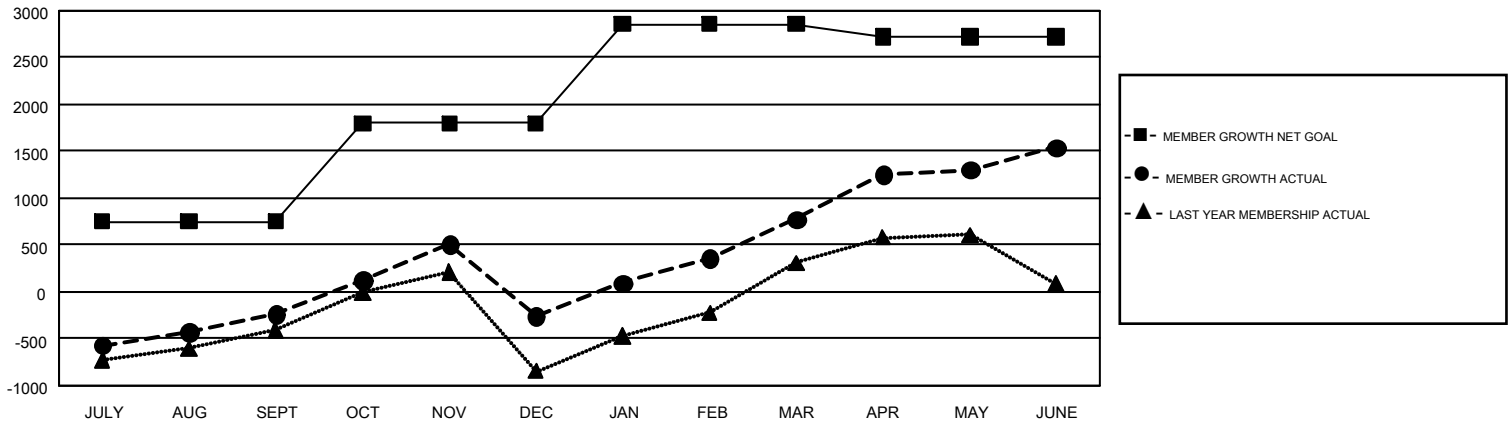
REPORT DOES NOT INCLUDE CLUBS IN UNDISTRICTED AREAS.

Clubs				Members			
RESULTS FOR 2017-2018				RESULTS FOR 2017-2018			
QUARTER	NEW CLUB GOAL	NEW CLUBS	DROPPED CLUBS	QUARTER	MEMBER GROWTH NET GOAL	MEMBER GROWTH ACTUAL	DROPPED MEMBERS ACTUAL (including transfers)
JULY/AUG/SEPT	49	12	2	JULY/AUG/SEPT	750	1,346	1,443
OCT/NOV/DEC	36	32	32	OCT/NOV/DEC	1,050	1,577	1,545
JAN/FEB/MAR	33	22	6	JAN/FEB/MAR	1,060	1,842	516
APR/MAY/JUNE	12	23	12	APR/MAY/JUNE	-140	3,907	2,889

GOALS AND ACTUAL NEW CLUBS CUMULATIVE



GOALS AND ACTUAL MEMBERS CUMULATIVE



DROPPED CLUBS: 52	888 CLUBS OF 1,097 ADDED 1 OR MORE NEW MEMBERS	<u>GENDER DISTRIBUTION</u>
<u>DROPPED MEMBERS</u>	CLICK HERE FOR CUMULATIVE MEMBERSHIP DATA	MALE 25,717 (77.42%)
DECEASED 162		FEMALE 7,499 (22.58%)
CLUB CANCELLED 1,096		TOTAL FAMILY UNIT MEMBERS 0
OTHER 5,134		FAMILY MEMBERS PAYING HALF DUES 0
TOTAL 6,392		